

[ROI Calculator](#)

[International Distributors](#)

[Request Quote](#)

The GC Chaser is a Fast Oven Cool-Down Accessory. It improves the oven ventilation during the cool-down cycle. It runs completely unattended. It uses room air so it never needs to be refilled. Methods do not have to be re-validated.

Advantages of the GC Chaser

- Saves Time** Maximizes the workload of GC and GC-MS systems. Higher efficiency, faster turnaround, greater profitability.
- Chromatographic Integrity** Methods do not need re-validation. There is no impact on the separation.
- Easy to Implement** Installs in minutes.
- Fully Integrated** Automatic, unattended operation.
- Completely Transparent** No operator training required.
- Rugged** Employs rugged, industrial grade centrifugal blower.
- Utility** It can quickly be swapped to another GC for rush projects.
- Cost Effective** Quickly recovers initial cost and uses no consumables.

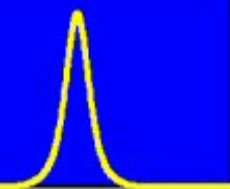
Learn more about the GC Chaser's

- Performance Data: [Performance Conditions](#) > [Cool-Down Comparison](#) > [Application Specific Data](#)

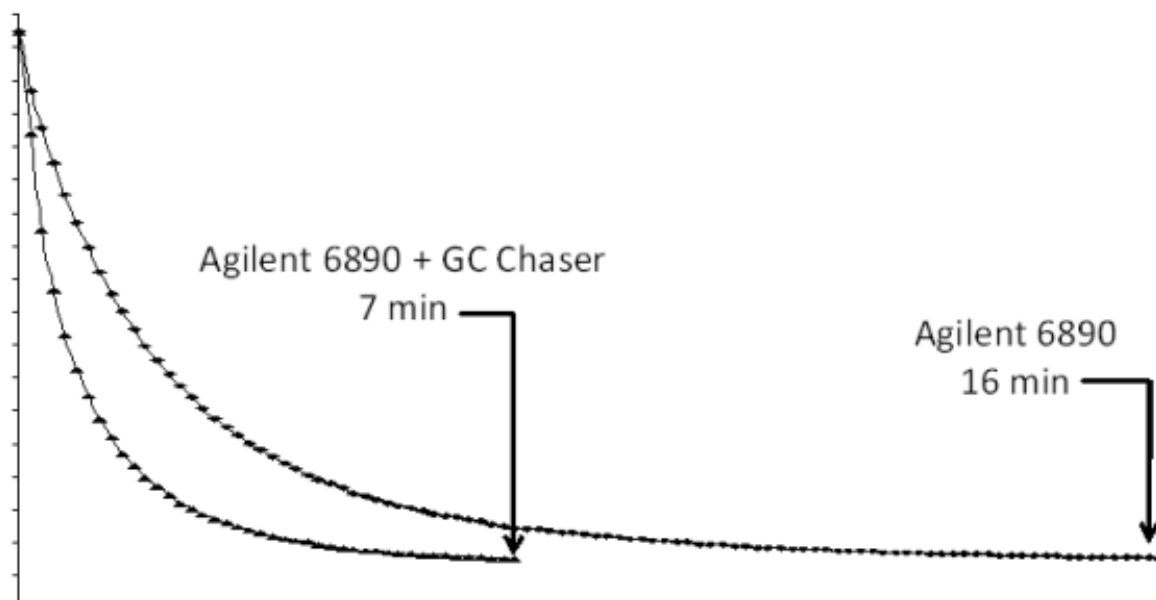


www.chromtech.net.au E-mail : info@chromtech.net.au Tel : +61 3 9762 2034 Fax : +61 3 9761 1169





Fast Cooling Performance: These curves demonstrate the advantage of the GC Chaser. In cooling from 350 to 30 C the GC Chaser saved 9 minutes from the cool-down time. Please view the following slide for more application specific time-savings.



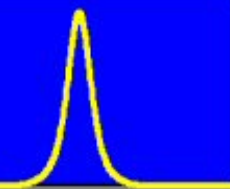
Learn more about the GC Chaser's

- Fast Cooling Performance: [Performance Conditions](#) > [Application Specific Data](#)



www.chromtech.net.au E-mail : info@chromtech.net.au Tel : +61 3 9762 2034 Fax : +61 3 9761 1169





Fast Cooling Performance: This table shows actual time savings taken from a working laboratory under optimal temperature and ventilation conditions.

Application	Cool-down Range	Time Saved per Sample (min)
Volatiles	220°C to 32°C	7.3
Petroleum Hydrocarbons	350°C to 35°C	6.4
Semi-volatiles	350°C to 50°C	2.6
Pesticides and PCBs	350°C to 100°C	1.2

Learn more about the GC Chaser's

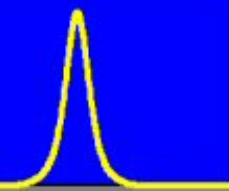
- Fast Cooling Performance: [Performance Conditions](#) > [Cool-Down Comparison](#)

HROMalytic Chromatography
Australian Distributors ECHnology Products '08
www.chromtech.net.au E-mail : info@chromtech.net.au Tel : +61 3 9762 2034 Fax : +61 3 9761 1169



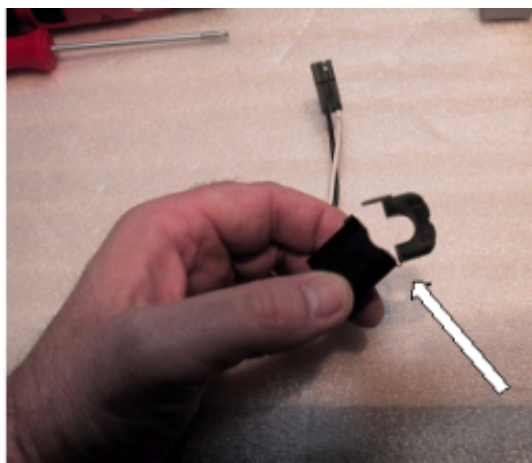
Zip Scientific Fast GC

Good People, Top-notch Products and Excellent Service



Interface: Our Fast GC Accessories interface with the host GC by sensing the current applied to the oven heater. A current transformer snaps around one of the heater wires of the GC. That's it! Simple, Easy, non-Intrusive.

The GC Racer applies a proportionate amount of current to the accessory heater whenever oven heater current is sensed. Both heaters work together to achieve fast temperature programming up to 120°C/min.



The GC Chaser determines the end of the temperature program when the oven current is stopped. The blower turns on to start the fast oven cool-down cycle and stops automatically when the oven reaches the start temperature.

HRMalytic Chromatography
Australian Distributors **ECH**nology Products '08
www.chromtech.net.au E-mail : info@chromtech.net.au Tel : +61 3 9762 2034 Fax : +61 3 9761 1169

