



MALE LUERS
PG-17



FEMALE LUERS
PG-20



ADAPTERS
PG-21



COUPLERS
PG-21



TEES
PG-22



ELBOWS
PG-22



PLUGS & CAPS
PG-23



LUER TO THREAD
PG-23



PANEL MOUNTS & ACCESSORIES
PG-25



CUSTOM LUER FITTINGS
PG-34



OUR LUER TAPERS

Value Plastics® luer tapers are made to the ISO 594-1 standard, and may be connected to other luers meeting ISO standards. Please test your application to verify the performance of the interconnection.

Value Plastics' luer fittings come in over 100 configurations and several materials for the device designer, joining tubing from 1/16" (1.6 mm) to 1/4" (6.4 mm).

Published ISO Design Standard

- Well understood worldwide
- Often assures interconnections without need to retrofit

Rotating Lock Permits Tube Positioning Prior To Tightening

- Minimizes twisting and kinking of tubing

Tapered Cone Seal

- Reliable
- Inexpensive
- Uncomplicated

Available In Many Materials

- Facilitates optimal material selection for your application

Inexpensive

- Facilitates single-use

Easy To Understand

- Ease of use in field

Many Configuration Options

- Adaptable to wide range of applications

Security Options (Fixed Lock, Rotating Lock, No Lock)

- Tailorable to your specific application

Material Suffix Key

- | | | | |
|--------------------------|--------------------------------------|-------------------------|--------------------|
| -1 White Nylon | -10 Acetal | -2 Black Nylon | -3 Red Nylon |
| -4 Green Nylon | -5 Blue Nylon | -06 Orange Nylon | -07 Yellow Nylon |
| -6 Natural Polypropylene | -6005 Animal-Free Polypropylene | -8003 Natural ABS | -81 Lace White ABS |
| -9 Clear Polycarbonate | -9002 Radiation Stable Polycarbonate | -J1A Natural Kynar PVDF | |

MTLL004 (-1 -2 -3 -4 -5 -06 -07 -6 -6005 -9 -9002)
Male Luer Integral Lock Ring to 500 Series Barb, 1/16" (1.6 mm) ID Tubing



MTLL230 (-1 -2 -3 -4 -5 -06 -07 -6 -6005 -9 -9002 -J1A)
Male Luer Integral Lock Ring to 200 Series Barb, 1/8" (3.2 mm) ID Tubing



MTLL210 (-1 -2 -3 -4 -5 -06 -07 -6 -9 -9002 - J1A)
Male Luer Integral Lock Ring to 200 Series Barb, 1/16" (1.6 mm) ID Tubing



MTLL430 (-1 -3 -6 -9 -9002 -J1A)
Male Luer Integral Lock Ring to 400 Series Barb, 1/8" (3.2 mm) ID Tubing



MTLL410 (-1 -6 -9 -9002 - J1A)
Male Luer Integral Lock Ring to 400 Series Barb, 1/16" (1.6 mm) ID Tubing



MTLL025 (-1 -2 -3 -4 -5 -06 -6005 -07 -6 -9 -9002)
Male Luer Integral Lock Ring to 500 Series Barb, 5/32" (4.0 mm) ID Tubing



MTLL007 (-1 -2 -3 -4 -5 -06 -07 -6 -9 -9002)
Male Luer Integral Lock Ring to 500 Series Barb, 3/32" (2.4 mm) ID Tubing



MTLL240 (-1 -2 -3 -4 -5 -06 -07 -6 -9 -9002 -J1A)
Male Luer Integral Lock Ring to 200 Series Barb, 5/32" (4.0 mm) ID Tubing



MTLL220 (-1 -2 -3 -4 -5 -06 -07 -6 -9 -9002 -J1A)
Male Luer Integral Lock Ring to 200 Series Barb, 3/32" (2.4 mm) ID Tubing



MTLL445 (-1 -6 -9 -9002 -J1A)
Male Luer Integral Lock Ring to 400 Series Barb, .170" (4.3 mm) ID Tubing



MTLL420 (-1 -6 -6005 -9 -9002 -J1A)
Male Luer Integral Lock Ring to 400 Series Barb, 3/32" (2.4 mm) ID Tubing



MTLL035 (-1 -2 -3 -4 -5 -06 -07 -6 -6005 -9 -9002)
Male Luer Integral Lock Ring to 500 Series Barb, 3/16" (4.8 mm) ID Tubing



MTLL013 (-1 -2 -3 -4 -5 -06 -07 -6 -6005 -9 -9002)
Male Luer Integral Lock Ring to 500 Series Barb, 1/8" (3.2 mm) ID Tubing



MTLL250 (-1 -2 -3 -4 -5 -06 -07 -6 -8003 -9 -9002 -J1A)
Male Luer Integral Lock Ring to 200 Series Barb, 3/16" (4.8 mm) ID Tubing



LUER

Material Suffix Key

- | | | | |
|--------------------------|--------------------------------------|-------------------------|--------------------|
| -1 White Nylon | -10 Acetal | -2 Black Nylon | -3 Red Nylon |
| -4 Green Nylon | -5 Blue Nylon | -06 Orange Nylon | -07 Yellow Nylon |
| -6 Natural Polypropylene | -6005 Animal-Free Polypropylene | -8003 Natural ABS | -81 Lace White ABS |
| -9 Clear Polycarbonate | -9002 Radiation Stable Polycarbonate | -J1A Natural Kynar PVDF | |

MTLL450 (-1 -6 -9 -9002 -J1A)
Male Luer Integral Lock Ring to 400 Series Barb, 3/16" (4.8 mm) ID Tubing



MTLL055 (-1 -2 -3 -4 -06 -07 -6 -6005 -9 -9002)
Male Luer Integral Lock Ring to 500 Series Barb, 1/4" (6.4 mm) ID Tubing



MTLL360 (-1 -2 -6 -6005 -9 -9002 -J1A)
Male Luer Integral Lock Ring to 300 Series Barb, 1/4" (6.4 mm) ID Tubing



MLRL004 (-1 -6 -9)
Male Luer to 500 Series Barb, 1/16" (1.6 mm) ID Tubing (May be used with separate rotating lock ring; FSLLR)



MLRL007 (-1 -6 -9)
Male Luer to 500 Series Barb, 3/32" (2.4 mm) ID Tubing (May be used with separate rotating lock ring; FSLLR)



MLRL013 (-1 -6 -9)
Male Luer to 500 Series Barb, 1/8" (3.2 mm) ID Tubing (May be used with separate rotating lock ring; FSLLR)



MLRL025 (-1 -6 -9)
Male Luer to 500 Series Barb, 5/32" (4.0 mm) ID Tubing (May be used with separate rotating lock ring; FSLLR)



MLRL035 (-1 -6 -9 -9002)
Male Luer to 500 Series Barb, 3/16" (4.8 mm) ID Tubing (May be used with separate rotating lock ring; FSLLR)



MLRL055 (-1 -6 -9)
Male Luer to 500 Series Barb, 1/4" (6.4 mm) ID Tubing (May be used with separate rotating lock ring; FSLLR)



FSLLR (-1 -2 -3 -4 -5 -06 -07 -6 -9 -9002)
Finger Snap Luer Lock Ring



IT'S A LOCK WITH VALUE PLASTICS!

Our MLRL and MSL Series of fittings can be used both as a slip luer or as a locking luer with the addition of our FSLLR luer lock ring, which allows color coding without flow path contact. Our MSL/FSLLR combination results in a stationary lock ring. Use a combination of MLRL and FSLLR to create a color coded rotating lock ring.

The MLRL allows FSLLR/lock ring rotation



The MSL has flanges which lock into the FSLLR, preventing rotation



Used together, you can create a color coded male luer with lock ring



MALE LUER:
Slip, or for use with Stationary Lock Ring

MALE LUER:
Slip

Material Suffix Key

- | | | | |
|--------------------------|--------------------------------------|-------------------------|--------------------|
| -1 White Nylon | -10 Acetal | -2 Black Nylon | -3 Red Nylon |
| -4 Green Nylon | -5 Blue Nylon | -06 Orange Nylon | -07 Yellow Nylon |
| -6 Natural Polypropylene | -6005 Animal-Free Polypropylene | -8003 Natural ABS | -81 Lace White ABS |
| -9 Clear Polycarbonate | -9002 Radiation Stable Polycarbonate | -J1A Natural Kynar PVDF | |

MLS004 (-1 -6 -9)
Male Luer to 500 Series Barb, 1/16" (1.6 mm) ID Tubing (May be used with separate stationary lock ring; FSLLR)



MLS007 (-1 -6 -9)
Male Luer to 500 Series Barb, 3/32" (2.4 mm) ID Tubing (May be used with separate stationary lock ring; FSLLR)



MLS013 (-1 -6 -9)
Male Luer to 500 Series Barb, 1/8" (3.2 mm) ID Tubing (May be used with separate stationary lock ring; FSLLR)



MLS025 (-1 -6 -9)
Male Luer to 500 Series Barb, 5/32" (4.0 mm) ID Tubing (May be used with separate stationary lock ring; FSLLR)



MLS035 (-1 -6 -9)
Male Luer to 500 Series Barb, 3/16" (4.8 mm) ID Tubing (May be used with separate stationary lock ring; FSLLR)



MLS055 (-1 -6 -9)
Male Luer to 500 Series Barb, 1/4" (6.4 mm) ID Tubing (May be used with separate stationary lock ring; FSLLR)



MTLS210 (-1 -6 -9 -J1A)
Male Luer Slip to 200 Series Barb, 1/16" (1.6 mm) ID Tubing



MSL004 (-1 -6 -9 -9002)
Male Luer Slip to 500 Series Barb, 1/16" (1.6 mm) ID Tubing



MTLS220 (-1 -3 -5 -6 -81 -9 -J1A)
Male Luer Slip to 200 Series Barb, 3/32" (2.4 mm) ID Tubing



MSL007 (-1 -6 -9 -9002)
Male Luer Slip to 500 Series Barb, 3/32" (2.4 mm) ID Tubing



MTLS230 (-1 -3 -5 -6 -81 -9 -9002 -J1A)
Male Luer Slip to 200 Series Barb, 1/8" (3.2 mm) ID Tubing



MSL013 (-1 -6 -9 -9002)
Male Luer Slip to 500 Series Barb, 1/8" (3.2 mm) ID Tubing



MTLS240 (-1 -2 -5 -6 -81 -9 -J1A)
Male Luer Slip to 200 Series Barb, 5/32" (4.0 mm) ID Tubing



MSL025 (-1 -6 -9 -9002)
Male Luer Slip to 200 Series Barb, 5/32" (4.0 mm) ID Tubing



MSL035 (-1 -6 -9 -9002 -J1A)
Male Luer Slip to 500 Series Barb, 3/16" (4.8 mm) ID Tubing



MSL055 (-1 -6 -9 -9002)
Male Luer Slip to 500 Series Barb, 1/4" (6.4 mm) ID Tubing



LUER



our online ordering for component parts, now available 24 hours a day, 7 days a week, with no \$ minimums! You can find every catalog part at:

www.valueplastics.com

(Online ordering is not available in countries served by our regional partners)

Material Suffix Key

-1 White Nylon

-4 Green Nylon

-6 Natural Polypropylene

-9 Clear Polycarbonate

-10 Acetal

-5 Blue Nylon

-6005 Animal-Free Polypropylene

-9002 Radiation Stable Polycarbonate

-2 Black Nylon

-06 Orange Nylon

-8003 Natural ABS

-J1A Natural Kynar PVDF

-3 Red Nylon

-07 Yellow Nylon

-81 Lace White ABS

FTLL004 (-1 -2 -3 -4 -5 -06 -07 -6 -9 -9002 -J1A)

Female Luer Thread Style to 500 Series Barb, 1/16" (1.6 mm) ID Tubing


FTLL210 (-1 -2 -3 -5 -6 -9 -9002 -J1A)

Female Luer Thread Style to 200 Series Barb, 1/16" (1.6 mm) ID Tubing


FTLL410 (-1 -6 -9 -9002 -J1A)

Female Luer Thread Style to 400 Series Barb, 1/16" (1.6 mm) ID Tubing


FTLL007 (-1 -2 -3 -4 -5 -06 -07 -6 -9 -9002)

Female Luer Thread Style to 500 Series Barb, 3/32" (2.4 mm) ID Tubing


FTLL220 (-1 -3 -5 -6 -9 -9002 -J1A)

Female Luer Thread Style to 200 Series Barb, 3/32" (2.4 mm) ID Tubing


FTLL420 (-1 -6 -6005 -9 -9002 -J1A)

Female Luer Thread Style to 400 Series Barb, 3/32" (2.4 mm) ID Tubing


FTLL013 (-1 -2 -3 -4 -5 -06 -07 -6 -9 -9002)

Female Luer Thread Style to 500 Series Barb, 1/8" (3.2 mm) ID Tubing


FTLL230 (-1 -2 -3 -5 -6 -6005 -9 -9002 -J1A)

Female Luer Thread Style to 200 Series Barb, 1/8" (3.2 mm) ID Tubing


FTLL430 (-1 -6 -9 -9002 -J1A)

Female Luer Thread Style to 400 Series Barb, 1/8" (3.2 mm) ID Tubing


FTLL025 (-1 -2 -3 -4 -5 -06 -07 -6 -6005 -9 -9002)

Female Luer Thread Style to 500 Series Barb, 5/32" (4.0 mm) ID Tubing


FTLL240 (-0USP* -1 -2 -3 -5 -6 -9 -9002 -J1A)

Female Luer Thread Style to 200 Series Barb, 5/32" (4.0 mm) ID Tubing

*Natural Nylon USP Class VI


FTLL445 (-1 -6 -9 -9002 -J1A)

Female Luer Thread Style to 400 Series Barb, .170" (4.3 mm) ID Tubing


FTLL035 (-1 -2 -3 -4 -5 -06 -07 -6 -6005 -9 -9002 -J1A)

Female Luer Thread Style to 500 Series Barb, 3/16" (4.8 mm) ID Tubing


FTLL250 (-1 -3 -5 -6 -9 -9002 -J1A)

Female Luer Thread Style to 200 Series Barb, 3/16" (4.8 mm) ID Tubing


FTLL450 (-1 -6 -9 -9002 -J1A)

Female Luer Thread Style to 400 Series Barb, 3/16" (4.8 mm) ID Tubing


FTLL055 (-1 -2 -3 -4 -5 -06 -07 -6 -6005 -9 -9002)

Female Luer Thread Style to 500 Series Barb, 1/4" (6.4 mm) ID Tubing


FTLL360 (-1 -3 -5 -6 -9 -9002 -J1A)

Female Luer Thread Style to 300 Series Barb, 1/4" (6.4 mm) ID Tubing



FEMALE LUER:
Smooth Bore, Thread Style

FEMALE LUER:
Lug Style

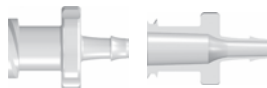
Material Suffix Key

- | | | | |
|--------------------------|--------------------------------------|-------------------------|--------------------|
| -1 White Nylon | -10 Acetal | -2 Black Nylon | -3 Red Nylon |
| -4 Green Nylon | -5 Blue Nylon | -06 Orange Nylon | -07 Yellow Nylon |
| -6 Natural Polypropylene | -6005 Animal-Free Polypropylene | -8003 Natural ABS | -81 Lace White ABS |
| -9 Clear Polycarbonate | -9002 Radiation Stable Polycarbonate | -J1A Natural Kynar PVDF | |

FTLLSB004 (-1 -6 -9)
Female Luer Thread Style Smooth Bore to 500 Series Barb, 1/16" (1.6 mm) ID Tubing



FTLLSB007 (-1 -6 -9)
Female Luer Thread Style Smooth Bore to 500 Series Barb, 3/32" (2.4 mm) ID Tubing



FTLLSB013 (-1 -6 -9)
Female Luer Thread Style Smooth Bore to 500 Series Barb, 1/8" (3.2 mm) ID Tubing



WHY CHOOSE A SMOOTH BORE?

Our Smooth Bore Luers have a smooth inner transition providing for easy insertion of guide wires, probes and other devices.

These components feature a specially designed finger grip to differentiate them from our other luer connectors.

FEMALE LUER:
Lug Style

FTL10 (-1 -6 -9 -J1A)
Female Luer Lug Style to Classic Series Barb, 1/16" (1.6 mm) ID Tubing



FTL210 (-1 -6 -9 -J1A)
Female Luer Lug Style to 200 Series Barb, 1/16" (1.6 mm) ID Tubing



FTL20 (-1 -07 -6 -9 -J1A)
Female Luer Lug Style to Classic Series Barb, 3/32" (2.4 mm) ID Tubing



FTL220 (-1 -3 -5 -6 -9 -J1A)
Female Luer Lug Style to 200 Series Barb, 3/32" (2.4 mm) ID Tubing



FTL30 (-1 -6 -9 -J1A)
Female Luer Lug Style to Classic Series Barb, 1/8" (3.2 mm) ID Tubing



FTL230 (-1 -3 -5 -6 -9 -J1A)
Female Luer Lug Style to 200 Series Barb, 1/8" (3.2 mm) ID Tubing



FTL240 (-1 -6 -9)
Female Luer Lug Style to 200 Series Barb, 5/32" (4.0 mm) ID Tubing



LUER:
Adapters, Couplers and Lock Rings

FSLLR (-1 -2 -3 -4 -5 -06 -07 -6 -9 -9002)
Finger Snap Luer Lock Ring



MLRLC (-1 -6 -6005 -9)
Male Luer Coupler (May be used with separate rotating lock rings; FSLLR)



MTLCS (-1 -6 -9 -J1A)
Male Luer Slip Coupler



FTLLC (-1 -6 -9 -9002 -J1A)
Female Luer Thread Style Coupler



LUER

Material Suffix Key

- 1 White Nylon
- 4 Green Nylon
- 6 Natural Polypropylene
- 9 Clear Polycarbonate
- 10 Acetal
- 5 Blue Nylon
- 6005 Animal-Free Polypropylene
- 9002 Radiation Stable Polycarbonate
- 2 Black Nylon
- 06 Orange Nylon
- 8003 Natural ABS
- J1A Natural Kynar PVDF
- 3 Red Nylon
- 07 Yellow Nylon
- 81 Lace White ABS

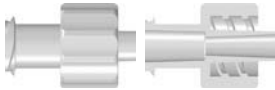
FTLC (-1 -6 -9 -9002 -J1A)
Female Luer Lug Style Coupler



FTLE (-1 -6 -9 -J1A)
Female Luer Lug Style Elbow



LC34 (-1 -6 -9 -9002 -J1A)
Male Luer Integral Lock Ring to Female Luer Thread Style Coupler



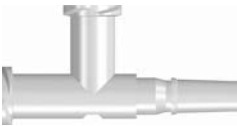
LE87 (-1 -6 -8003 -9 -9002)
Male Luer to Female Luer Thread Style Elbow (May be used with separate rotating lock ring; FSLLR)



LC78 (-1 -6 -9 -9002 -J1A)
Male Luer to Female Luer Thread Style Coupler (May be used with separate rotating lock ring; FSLLR)



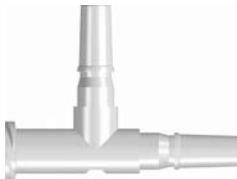
LT878 (-1 -6 -9 -9002)
Female Luer Thread Style (2) to Male Luer Tee (May be used with separate rotating lock ring; FSLLR)



LE7220 (-1 -2)
Male Luer to 200 Series Barb Elbow, 3/32" (2.4 mm) ID Tubing (May be used with separate rotating lock ring; FSLLR)



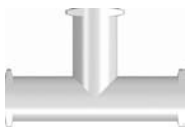
LT787 (-1 -6 -9 -9002)
Male Luer (2) to Female Luer Thread Style Tee (May be used with separate rotating lock ring; FSLLR)



LE7230 (-1 -6 -9)
Male Luer to 200 Series Barb Elbow 1/8" (3.2 mm) ID Tubing (May be used with separate rotating lock ring; FSLLR)



FTLT (-1 -6 -9 -J1A)
Female Luer Lug Style Tee



CA091 (-001*)
Male Luer Elbow to 3/16" Classic Series Barb, (CF361-9002) with Rotating Lock Ring (FSLLR-9002)



*Radiation Stable Polycarbonate

FTLLE (-1 -6 -9 -J1A)
Female Luer Thread Style Elbow



Material Suffix Key

- | | | | |
|--------------------------|--------------------------------------|-------------------------|--------------------|
| -1 White Nylon | -10 Acetal | -2 Black Nylon | -3 Red Nylon |
| -4 Green Nylon | -5 Blue Nylon | -06 Orange Nylon | -07 Yellow Nylon |
| -6 Natural Polypropylene | -6005 Animal-Free Polypropylene | -8003 Natural ABS | -81 Lace White ABS |
| -9 Clear Polycarbonate | -9002 Radiation Stable Polycarbonate | -J1A Natural Kynar PVDF | |

MTLLP (-1 -2 -3 -07 -6 -6005 -9 -J1A)

Male Luer Integral Lock Ring Plug, Closed at Luer Tip



LP4 (-1 -2 -3 -4 -5 -6 -9 -9002 -J1A)

Male Luer Integral Lock Ring Plug, Closed at Grip



VLP4 (-1 -3 -6 -81 -J1A)

Male Luer Integral Lock Ring Vented Plug, Closed at Grip



MLRLP (-1 -6 -9)

Male Luer Plug (May be used with separate rotating lock ring; FSLLR)



MLSLP (-1 -6 -9)

Male Luer Plug (May be used with separate stationary lock ring; FSLLR)



MTLP (-1 -6 -9 -J1A)

Male Luer Plug, Closed at Tether Loop (May be used with separate stationary lock ring; MLLR)



MTLSP (-1 -6 -9 -J1A)

Male Luer Slip Plug, Closed at Grip



FTLP (-1 -6 -9 -J1A)

Female Luer Lug Style Cap with Tether Loop



FTLLP (-1 -2 -3 -5 -07 -6 -6005 -9 -9002 -J1A)

Female Luer Thread Style Cap



LP34 (-1 -3 -5 -6 -9 -9002 -J1A)

Male Luer Integral Lock Ring to Female Luer Thread Style Plug



LUER TO THREAD:

Male

ABSML-6 OVER (-1 -2 -3 -4 -5 -06 -07)

Male Luer with Rotating Lock Ring and 5/16" Hex to 1/4-28 UNF Bottom Sealing Thread



ABSML-J1A OVER (-1 -2 -3 -4 -5 -06 -07)

Male Luer with Rotating Lock Ring and 5/16" Hex to 1/4-28 UNF Bottom Sealing Thread



XMTLL (-1 -6 -9 -J1A)

Male Luer Integral Lock Ring to 10-32 Special Tapered Thread



SMTLL (-1 -6 -9 -J1A)

Male Luer Integral Lock Ring to 1/4-28 UNF Thread



18MTLL (-1 -2 -6 -J1A)

Male Luer Integral Lock Ring with 7/16" Hex to 1/8-27 NPT Thread



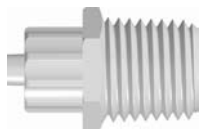
LUER TO THREAD:
Male

LUER TO THREAD:
Female

Material Suffix Key

- | | | | |
|--------------------------|--------------------------------------|-------------------------|--------------------|
| -1 White Nylon | -10 Acetal | -2 Black Nylon | -3 Red Nylon |
| -4 Green Nylon | -5 Blue Nylon | -06 Orange Nylon | -07 Yellow Nylon |
| -6 Natural Polypropylene | -6005 Animal-Free Polypropylene | -8003 Natural ABS | -81 Lace White ABS |
| -9 Clear Polycarbonate | -9002 Radiation Stable Polycarbonate | -J1A Natural Kynar PVDF | |

14MTLL (-1 -2 -6)
Male Luer Integral Lock Ring with 9/16" Hex to 1/4-18 NPT Thread



XMLRL (-1 -6 -9 -9002)
Male Luer with 1/4" Hex to 10-32 Special Tapered Thread (May be used with separate rotating lock ring; FSLLR)



SMLRL (-1 -6 -9 -J1A)
Male Luer with 5/16" Hex to 1/4-28 UNF Thread (May be used with separate rotating lock ring; FSLLR)



BSMLRL (-6 -J1A)
Male Luer with 5/16" Hex to 1/4-28 Bottom-Sealing Thread (May be used with separate rotating lock ring; FSLLR)



LUER TO THREAD:
Female

XFTLL (-1 -6 -9 -J1A)
Female Luer Thread Style with 1/4" Hex to 10-32 Special Tapered Thread



KFTLL (-1 -6 -9 -J1A)
Female Luer Thread Style with 1/4" Hex to 10-32 UNF Thread



SFTLL (-1 -2 -6 -9 -J1A)
Female Luer Thread Style with 5/16" Hex to 1/4-28 UNF Thread



BSFTLL (-1 -6 -J1A)
Female Luer Thread Style with 5/16" Hex to 1/4-28 UNF Bottom Sealing Thread



XFTL (-1 -6 -9 -J1A)
Female Luer Lug Style with 1/4" Hex to 10-32 Special Tapered Thread



KFTL (-1 -6 -9 -J1A)
Female Luer Lug Style with 1/4" Hex to 10-32 UNF Thread



SFTL (-1 -6 -9 -J1A)
Female Luer Lug Style with 5/16" Hex to 1/4-28 UNF Thread



18FTLL (-1 -6 -J1A)
Female Luer Thread Style with 7/16" Hex to 1/8-27 NPT Thread



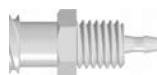
18LFTLL (-1 -4 -5 -6 -J1A -62*)
Female Luer Thread Style Elbow with 7/16" Hex to 1/8-27 NPT Thread



*Black Polypropylene

PANEL MOUNTS:
Female Thread Style and Lug Style Luer

FLLB210 (-1 -2 -6 -9 -J1A)
Female Luer Thread Style Panel Mount 1/4-28 UNF to 200 Series Barb, 1/16" (1.6 mm) ID Tubing



FLLB220 (-1 -2 -6 -9 -J1A)
Female Luer Thread Style Panel Mount 1/4-28 UNF to 200 Series Barb, 3/32" (2.4 mm) ID Tubing



FLLB230 (-1 -2 -6 -9 -J1A)
Female Luer Thread Style Panel Mount 1/4-28 UNF to 200 Series Barb, 1/8" (3.2 mm) ID Tubing



PANEL MOUNTS:

Female Lug Style, Thread Style and Male Luer

PANEL MOUNT ACCESSORIES:

Lock Nuts and Color Coding Rings

Material Suffix Key

- 1 White Nylon
- 4 Green Nylon
- 6 Natural Polypropylene
- 9 Clear Polycarbonate
- 10 Acetal
- 5 Blue Nylon
- 6005 Animal-Free Polypropylene
- 9002 Radiation Stable Polycarbonate
- 2 Black Nylon
- 06 Orange Nylon
- 8003 Natural ABS
- J1A Natural Kynar PVDF
- 3 Red Nylon
- 07 Yellow Nylon
- 81 Lace White ABS

FTLB210 (-1 -6 -9 -J1A)

Female Luer Lug Style Panel Mount 1/4-28 UNF to 200 Series Barb, 1/16" (1.6 mm) ID Tubing



FTLB220 (-1 -6 -9 -J1A)

Female Luer Lug Style Panel Mount 1/4-28 UNF to 200 Series Barb, 3/32" (2.4 mm) ID Tubing



FTLB230 (-1 -6 -9 -J1A)

Female Luer Lug Style Panel Mount 1/4-28 UNF to 200 Series Barb, 1/8" (3.2 mm) ID Tubing



FTLLBMLRL (-1 -6)

Female Luer Thread Style Panel Mount 1/4-28 UNF to Male Luer (May be used with separate rotating lock ring; FSLLR)



MLRLB210 (-1 -6)

Male Luer Panel Mount 10-32 UNF to 200 Series Barb, 1/16" (1.6 mm) ID Tubing, (May be used with separate rotating lock ring; FSLLR)



MLRLB220 (-1 -6)

Male Luer Panel Mount 10-32 UNF to 200 Series Barb, 3/32" (2.4 mm) ID Tubing, (May be used with separate rotating lock ring; FSLLR)



MLRLB230 (-1 -6)

Male Luer Panel Mount 1/4-28 UNF to 200 Series Barb, 1/8" (3.2 mm) ID Tubing, (May be used with separate rotating lock ring; FSLLR)



CCR (-1 -2 -3 -4 -5 -06 -07)

Color Coded Ring (For use with PMS, PMK, FTLLB or FTLB panel mount fittings)



CCLR (-1 -2 -3 -4 -5 -06 -07)

Color Coded Lock Ring (For use with PMS, PMK, FTLLB or FTLB panel mount fittings)



PMKN (-XO*)

Panel Mount Nut 10-32 UNF with 3/8" Hex (For use with PMK panel mount fittings)



*Stainless Steel

PMSN (-XO*)

Panel Mount Nut 1/4-28 UNF with 7/16" Hex (For use with PMS, FTLB, and FTLLB panel mount fittings)



*Stainless Steel

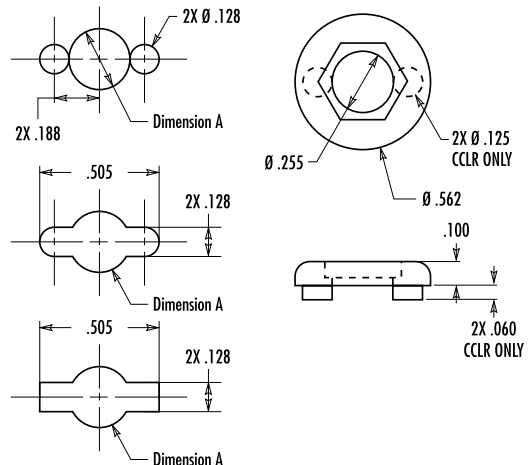
LNS (-1 -2 -3 -4 -5 -06 -07 -6 -81 -J1A)

1/4-28 UNF Panel Mount Lock Nut (For use with PMS, FTLLB or FTLB panel mount fittings)



SELECT THE CORRECT LOCK NUT FOR YOUR PANEL MOUNT:

PART	Dimension A	Use Lock Nut
FTLLB Series	.255"	PMSN or LNS
FTLB Series	.255"	PMSN or LNS
FTLLBMLRL	.255"	PMSN or LNS
MLRLB210	.193"	PMKN
MLRLB220	.193"	PMKN
MLRLB230	.255	PMSN or LNS



LUER