

LUER TO THREAD:

Male

LUER TO THREAD:

Female

Material Suffix Key

- | | | | |
|--------------------------|--------------------------------------|-------------------------|--------------------|
| -1 White Nylon | -10 Acetal | -2 Black Nylon | -3 Red Nylon |
| -4 Green Nylon | -5 Blue Nylon | -06 Orange Nylon | -07 Yellow Nylon |
| -6 Natural Polypropylene | -6005 Animal-Free Polypropylene | -8003 Natural ABS | -81 Lace White ABS |
| -9 Clear Polycarbonate | -9002 Radiation Stable Polycarbonate | -J1A Natural Kynar PVDF | |

14MTLL (-1 -2 -6)

Male Luer Integral Lock Ring with 9/16" Hex to 1/4-18 NPT Thread



XFTL (-1 -6 -9 -J1A)

Female Luer Lug Style with 1/4" Hex to 10-32 Special Tapered Thread



XMLRL (-1 -6 -9 -9002)

Male Luer with 1/4" Hex to 10-32 Special Tapered Thread (May be used with separate rotating lock ring; FSLLR)



KFTL (-1 -6 -9 -J1A)

Female Luer Lug Style with 1/4" Hex to 10-32 UNF Thread



SMLRL (-1 -6 -9 -J1A)

Male Luer with 5/16" Hex to 1/4-28 UNF Thread (May be used with separate rotating lock ring; FSLLR)



SFTL (-1 -6 -9 -J1A)

Female Luer Lug Style with 5/16" Hex to 1/4-28 UNF Thread



BSMLRL (-6 -J1A)

Male Luer with 5/16" Hex to 1/4-28 Bottom-Sealing Thread (May be used with separate rotating lock ring; FSLLR)



18FTLL (-1 -6 -J1A)

Female Luer Thread Style with 7/16" Hex to 1/8-27 NPT Thread

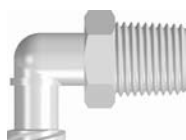


LUER TO THREAD:

Female

18FTLL (-1 -4 -5 -6 -J1A -62*)

Female Luer Thread Style Elbow with 7/16" Hex to 1/8-27 NPT Thread



*Black Polypropylene

XFTLL (-1 -6 -9 -J1A)

Female Luer Thread Style with 1/4" Hex to 10-32 Special Tapered Thread



PANEL MOUNTS:

Female Thread Style and Lug Style Luer

KFTLL (-1 -6 -9 -J1A)

Female Luer Thread Style with 1/4" Hex to 10-32 UNF Thread



FLLB210 (-1 -2 -6 -9 -J1A)

Female Luer Thread Style Panel Mount 1/4-28 UNF to 200 Series Barb, 1/16" (1.6 mm) ID Tubing



SFTLL (-1 -2 -6 -9 -J1A)

Female Luer Thread Style with 5/16" Hex to 1/4-28 UNF Thread



FLLB220 (-1 -2 -6 -9 -J1A)

Female Luer Thread Style Panel Mount 1/4-28 UNF to 200 Series Barb, 3/32" (2.4 mm) ID Tubing



BSFTLL (-1 -6 -J1A)

Female Luer Thread Style with 5/16" Hex to 1/4-28 UNF Bottom Sealing Thread



FLLB230 (-1 -2 -6 -9 -J1A)

Female Luer Thread Style Panel Mount 1/4-28 UNF to 200 Series Barb, 1/8" (3.2 mm) ID Tubing



PANEL MOUNTS:

Female Lug Style, Thread Style and Male Luer

PANEL MOUNT ACCESSORIES:

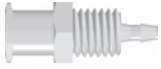
Lock Nuts and Color Coding Rings

Material Suffix Key

- 1 White Nylon
- 2 Black Nylon
- 3 Red Nylon
- 4 Green Nylon
- 06 Orange Nylon
- 07 Yellow Nylon
- 6 Natural Polypropylene
- 8003 Natural ABS
- 81 Lace White ABS
- 9 Clear Polycarbonate
- 10 Acetal
- 5 Blue Nylon
- 6005 Animal-Free Polypropylene
- 9002 Radiation Stable Polycarbonate
- J1A Natural Kynar PVDF

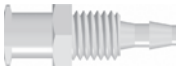
FTLB210 (-1 -6 -9 -J1A)

Female Luer Lug Style Panel Mount 1/4-28 UNF to 200 Series Barb, 1/16" (1.6 mm) ID Tubing



FTLB220 (-1 -6 -9 -J1A)

Female Luer Lug Style Panel Mount 1/4-28 UNF to 200 Series Barb, 3/32" (2.4 mm) ID Tubing



FTLB230 (-1 -6 -9 -J1A)

Female Luer Lug Style Panel Mount 1/4-28 UNF to 200 Series Barb, 1/8" (3.2 mm) ID Tubing



FTLLBMLRL (-1 -6)

Female Luer Thread Style Panel Mount 1/4-28 UNF to Male Luer (May be used with separate rotating lock ring; FSLLR)



MLRLB210 (-1 -6)

Male Luer Panel Mount 10-32 UNF to 200 Series Barb, 1/16" (1.6 mm) ID Tubing, (May be used with separate rotating lock ring; FSLLR)



MLRLB220 (-1 -6)

Male Luer Panel Mount 10-32 UNF to 200 Series Barb, 3/32" (2.4 mm) ID Tubing, (May be used with separate rotating lock ring; FSLLR)



MLRLB230 (-1 -6)

Male Luer Panel Mount 1/4-28 UNF to 200 Series Barb, 1/8" (3.2 mm) ID Tubing, (May be used with separate rotating lock ring; FSLLR)



CCR (-1 -2 -3 -4 -5 -06 -07)

Color Coded Ring (For use with PMS, PMK, FTLLB or FTLB panel mount fittings)



CCLR (-1 -2 -3 -4 -5 -06 -07)

Color Coded Lock Ring (For use with PMS, PMK, FTLLB or FTLB panel mount fittings)



PMKN (-XO*)

Panel Mount Nut 10-32 UNF with 3/8" Hex (For use with PMK panel mount fittings)



*Stainless Steel

PMSN (-XO*)

Panel Mount Nut 1/4-28 UNF with 7/16" Hex (For use with PMS, FTLB, and FTLLB panel mount fittings)



*Stainless Steel

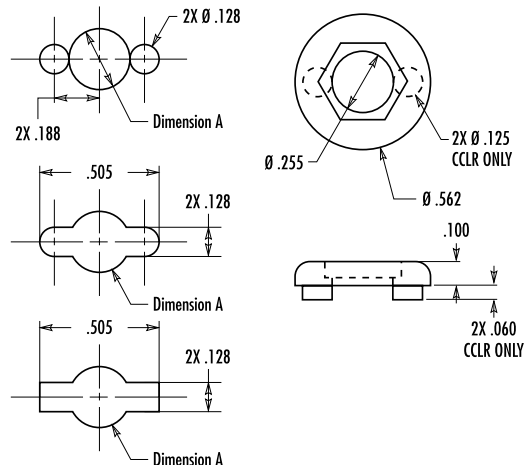
LNS (-1 -2 -3 -4 -5 -06 -07 -6 -81 -J1A)

1/4-28 UNF Panel Mount Lock Nut (For use with PMS, FTLLB or FTLB panel mount fittings)



SELECT THE CORRECT LOCK NUT FOR YOUR PANEL MOUNT:

PART	Dimension A	Use Lock Nut
FTLLB Series	.255"	PMSN or LNS
FTLB Series	.255"	PMSN or LNS
FTLLBMLRL	.255"	PMSN or LNS
MLRLB210	.193"	PMKN
MLRLB220	.193"	PMKN
MLRLB230	.255"	PMSN or LNS



LUER