

PANEL MOUNTS:

Female Lug Style, Thread Style and Male Luer

PANEL MOUNT ACCESSORIES:

Lock Nuts and Color Coding Rings

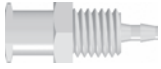
Material Suffix Key

- 1 White Nylon
- 4 Green Nylon
- 6 Natural Polypropylene
- 9 Clear Polycarbonate
- 10 Acetal
- 5 Blue Nylon
- 6005 Animal-Free Polypropylene
- 9002 Radiation Stable Polycarbonate

- 2 Black Nylon
- 06 Orange Nylon
- 8003 Natural ABS
- J1A Natural Kynar PVDF
- 3 Red Nylon
- 07 Yellow Nylon
- 81 Lace White ABS

FTLB210 (-1 -6 -9 -J1A)

Female Luer Lug Style Panel Mount 1/4-28 UNF to 200 Series Barb, 1/16" (1.6 mm) ID Tubing



FTLB220 (-1 -6 -9 -J1A)

Female Luer Lug Style Panel Mount 1/4-28 UNF to 200 Series Barb, 3/32" (2.4 mm) ID Tubing



FTLB230 (-1 -6 -9 -J1A)

Female Luer Lug Style Panel Mount 1/4-28 UNF to 200 Series Barb, 1/8" (3.2 mm) ID Tubing



FTLLBMLRL (-1 -6)

Female Luer Thread Style Panel Mount 1/4-28 UNF to Male Luer (May be used with separate rotating lock ring; FSLLR)



MLRLB210 (-1 -6)

Male Luer Panel Mount 10-32 UNF to 200 Series Barb, 1/16" (1.6 mm) ID Tubing, (May be used with separate rotating lock ring; FSLLR)



MLRLB220 (-1 -6)

Male Luer Panel Mount 10-32 UNF to 200 Series Barb, 3/32" (2.4 mm) ID Tubing, (May be used with separate rotating lock ring; FSLLR)



MLRLB230 (-1 -6)

Male Luer Panel Mount 1/4-28 UNF to 200 Series Barb, 1/8" (3.2 mm) ID Tubing, (May be used with separate rotating lock ring; FSLLR)



CCR (-1 -2 -3 -4 -5 -06 -07)

Color Coded Ring (For use with PMS, PMK, FTLLB or FTLB panel mount fittings)



CCLR (-1 -2 -3 -4 -5 -06 -07)

Color Coded Lock Ring (For use with PMS, PMK, FTLLB or FTLB panel mount fittings)



PMKN (-XO*)

Panel Mount Nut 10-32 UNF with 3/8" Hex (For use with PMK panel mount fittings)



*Stainless Steel

PMSN (-XO*)

Panel Mount Nut 1/4-28 UNF with 7/16" Hex (For use with PMS, FTLB, and FTLLB panel mount fittings)



*Stainless Steel

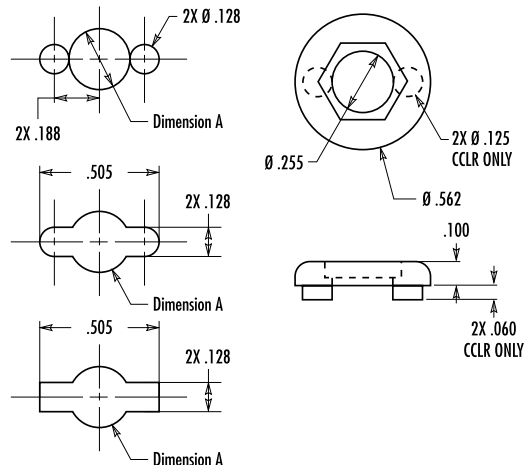
LNS (-1 -2 -3 -4 -5 -06 -07 -6 -81 -J1A)

1/4-28 UNF Panel Mount Lock Nut (For use with PMS, FTLLB or FTLB panel mount fittings)



SELECT THE CORRECT LOCK NUT FOR YOUR PANEL MOUNT:

PART	Dimension A	Use Lock Nut
FTLLB Series	.255"	PMSN or LNS
FTLB Series	.255"	PMSN or LNS
FTLLBMLRL	.255"	PMSN or LNS
MLRLB210	.193"	PMKN
MLRLB220	.193"	PMKN
MLRLB230	.255"	PMSN or LNS



LUER