

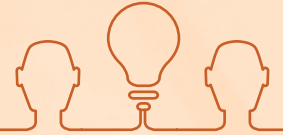
DESIGN CENTER



VALUE PLASTICS
DESIGN
CENTER

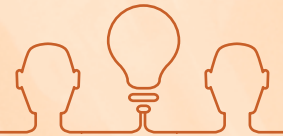
OUR PROCESS

DEFINITION PHASE



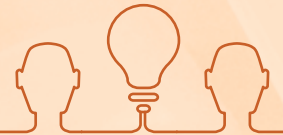
- Define application
- Quantify product usage
- Establish project budget and timeline with customer
- Identify prospective technical challenges
- Develop project plan

DESIGN PHASE



- Collaborative conceptual development
- Research existing technology
- Concept testing and customer review
- Establish final product specifications
- Complete design, gain customer approval

DEVELOPMENT PHASE



- Develop quality plan
- Fabrication and procurement of necessary tooling and equipment
- First Article inspection
- Qualify and validate product
- Customer product approval

PRODUCTION PHASE



- Release manufacturing, inspection and packaging plans
- Manufacture approved product

THE VALUE PLASTICS DESIGN CENTER

Specialists in Fluid Connections

We sometimes hear our customers say **“That would be the perfect fitting if only . . .”** We know a lot is expected of you: leading-edge product capabilities, lower costs, shorter design times, compounded by issues such as biocompatibility, precise flow rate requirements and tight physical envelopes.

As much as you might like to be, you know you're not an expert in everything - especially when it comes to specifying fittings and connectors that are often not your area of expertise.

Make it easy on yourself.

Contact the connection experts at the Value Plastics Design Center. Together we can develop a solution delivering exactly what you want, when you need it, with exceptional quality, at a surprisingly affordable price. Our dedicated team of fluid connection professionals collaborates with you to solve your most difficult challenges.

Our Design Center experts provide:

- Expert and timely design assistance from our dedicated technical staff with years of experience solving real world fluid connection challenges
- Technical support before and after the sale
- In-house testing facilities to validate and qualify design alternatives
- Assistance with medical qualification requirements needed to transform your design into a validated product.

Your Solution. Faster. Cheaper.

Value Plastics is dedicated to meeting your demanding quality and capability needs. The Value Plastics Design Center works with you to develop custom solutions keeping your projects moving - on time and within budget, whether it's a totally new concept or a refinement of one of our 3,100 products.

Call us today. Let the Value Plastics Design Center show you how we can affordably meet your exacting flexible tubing connector and fitting needs no matter how complex they might be.
+1 866-582 0965.

It's not often that one of our 3,100 off-the-shelf tubing fittings can't fill your application need. But when they won't, call on the Value Plastics Design Center. Our dedicated team of fluid connection professionals will collaborate with you to find the most appropriate and cost-effective solution.

As an example, a medical device manufacturer recently brought a challenge to the Design Center. Their device's tube fittings had the potential to be misconnected with similar, but distinctly different use, tubing fittings. The Design Center analyzed several potential connector solutions and, using Value Plastics' extensive application engineering base, developed a custom fitting that used reliable sealing technology negating any possibility of misconnect within the customer's proprietary surgical system and their corresponding clinical environment. The resulting custom fitting was engineered easier to use, has higher flow rates, and prevents misconnections, all resulting in greater competitive advantage for the customer.

The Value Plastics Design Center really can provide YOUR solution, faster and cheaper. Contact the Value Plastics Design Center today for an initial consultation, +1 866-582-0965, or email designcenter@valueplastics.com.

Following are examples of custom solutions that Value Plastics has developed. They are displayed to provide an idea of some of the most common modifications available. All the individual parts shown are available on special order. To review case studies, please visit our website at www.valueplastics.com/products/design_center.aspx



Material Suffix Key

-1 White Nylon

-6 Natural Polypropylene

-81 Lace White ABS

-J1A Natural Kynar PVDF

-2 Black Nylon

-62 Black Polypropylene

-9 Clear Polycarbonate

-3 Red Nylon

-63 Red Polypropylene

-91 White Polycarbonate

-5 Blue Nylon

-8 Gray Nylon

-9002 Radiation Stable Polycarbonate

CF104 (-6)Male Luer Integral Lock Ring Plug, \emptyset .033 Orifice at Luer Tip**CF226 (-6)**

High Flow Connector to 500 Series Barb, 1/4" (6.4 mm) ID Tubing (May be used with separate rotating lock ring; CF227)

**CF304 (-6)**

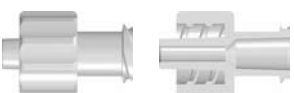
High Flow Connector Body with 500 Series Barb, 3/8" (9.5 mm) ID Tubing

**CF015 (-1)**

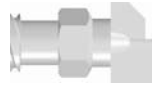
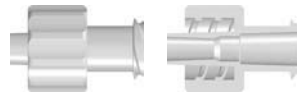
Female Luer Lug Style Flare to M6x.75 Thread

**CF131 (-1)**

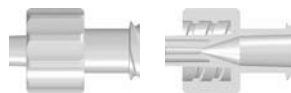
Male Luer Integral Lock Ring Plug, Closed at Grip (Short Luer)

**CF141 (-9)**Male Luer to Female Luer Thread Style Coupler (\emptyset .045 Thru Bore with \emptyset .055 Male Side Bond-in Port)**CF148 (-9002)**Male Luer to Female Luer Thread Style Coupler (\emptyset .045 Thru Bore with \emptyset .080 Male Side Bond-in Port)**CF184 (-1)**

Female Luer To Catheter Handle

**CF210 (-6)**Male Luer to Female Luer Thread Style Coupler (\emptyset .125 Center Bond-in Port)**CF213 (-3)**Male Luer Integral Lock Ring Plug, Closed at Grip (\emptyset .055 to \emptyset .060 Core)**CF224 (-9)**Male Luer Integral Lock Ring to 500 Series Barb, 5/32" (4 mm) ID Tubing (\emptyset .076 Bore)**CF233 (-6)**

Female Extended Luer Thread Style to 200 Series Barb, 1/16" (1.6 mm) ID Tubing

**CF235 (-3 -8 -91*)**Male Luer to Female Luer Thread Style Coupler (\emptyset .023 Thru Bore with \emptyset .033 Male Side Bond-in Port)

*White Polycarbonate

CF239 (-6)

Male Luer Integral Lock Ring to Female Luer Thread Style Extended Coupler

**CF322 (-1)**

Female Luer Lug Style Flare to 1/4-32 UNF Thread



Material Suffix Key

-1 White Nylon
 -6 Natural Polypropylene
 -81 Lace White ABS
 -J1A Natural Kynar PVDF

-2 Black Nylon
 -62 Black Polypropylene
 -9 Clear Polycarbonate

-3 Red Nylon
 -63 Red Polypropylene
 -91 White Polycarbonate

-5 Blue Nylon
 -8 Gray Nylon
 -9002 Radiation Stable Polycarbonate

CF006 (-81)

Elbow Connector with One Classic Series Barb, 1/8" (3.2 mm) Tubing



CF079 (-1)

1/8" Tee With Blank Single Leg to 200 Series Barb, for 1/8" (3.2 mm) ID Tubing



CF128 (-1)

Straight Through Connector for Orifice Insert, 200 Series Barbs, 1/8" (3.2 mm) ID Tubing



CF231 (-1 -5 -J1A)

Tee Reduction Connector with 200 and 400 Series Barbs, 1/8" (3.2 mm) and 3/32" (2.4 mm) ID Tubing



CF302 (-1)

Tee Reduction Connector with 400 Series Barbs, 1/16" (1.6 mm) and 3/32" (2.4 mm) ID Tubing



CF001 (-6)

Bottom Sealing 1/4-28 UNF Thread To Classic Series Barb, 1/16" (1.6 mm) ID Tubing



CF020 (-6 -62* -63)**

Custom 1/4-28 UNF Bottom Sealing Thread Tube End Coupler (Extended length) 1/8" (3.2 mm) OD Tubing



*Black Polypropylene

**Red Polypropylene

CF022 (-2)

10-32 UNF Thread with 1/4" Hex to Classic Series Barb, 1/16" (1.6 mm) ID Tubing



CF165 (-6)

1/4-28 UNF Thread with O-Ring Seal and 5/16" Hex to Classic Series Barb 1/16" (1.6 mm) ID Tubing



CF166 (-6)

1/4-28 UNF Thread Plug with O-Ring Seal and 5/16" Hex



CF173 (-6)

Bottom Sealing 1/4-28 UNF To 200 Series Barb, 3/16" (4.8 mm) ID Tubing



CF202 (-J1A)

10-32 UNF To Tube Elbow With Custom Thread Orientation and 400 Series Barb, 3/32" (2.4 mm) ID Tubing

