

Material Suffix Key

-1 White Nylon

-4 Green Nylon

-6 Natural Polypropylene

-9 Clear Polycarbonate

-10 Acetal

-5 Blue Nylon

-6005 Animal-Free Polypropylene

-9002 Radiation Stable Polycarbonate

-2 Black Nylon

-06 Orange Nylon

-8003 Natural ABS

-J1A Natural Kynar PVDF

-3 Red Nylon

-07 Yellow Nylon

-81 Lace White ABS

**Y210 (-1 -2 -6 -9 -J1A)**

Y Connector with 200 Series Barbs, 1/16" (1.6 mm) ID Tubing



**Y410 (-1 -2 -6 -J1A)**

Y Connector with 400 Series Barbs, 1/16" (1.6 mm) ID Tubing



**Y220 (-1 -2 -6 -9 -J1A)**

Y Connector with 200 Series Barbs, 3/32" (2.4 mm) ID Tubing



**Y420 (-1 -2 -6 -J1A)**

Y Connector with 400 Series Barbs, 3/32" (2.4 mm) ID Tubing



**Y230 (-1 -2 -3 -6 -9 -J1A)**

Y Connector with 200 Series Barbs, 1/8" (3.2 mm) ID Tubing



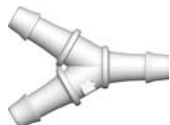
**Y430 (-1 -2 -6 -J1A)**

Y Connector with 400 Series Barbs, 1/8" (3.2 mm) ID Tubing



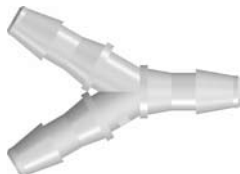
**Y013 (-6005)**

Y Connector with 500 Series Barbs, 1/8" (3.2 mm) ID Tubing



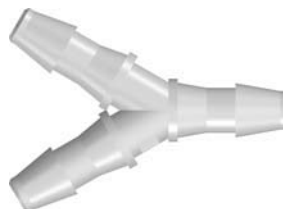
**Y240 (-1 -2 -6 -9 -J1A)**

Y Connector with 200 Series Barbs, 5/32" (4.0 mm) ID Tubing



**Y250 (-1 -2 -6 -9 -9002 -J1A)**

Y Connector with 200 Series Barbs, 3/16" (4.8 mm) ID Tubing



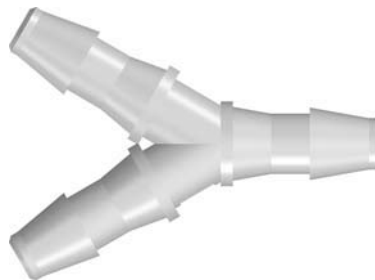
**Y450 (-1 -2 -6 -J1A)**

Y Connector with 400 Series Barbs, 3/16" (4.8 mm) ID Tubing



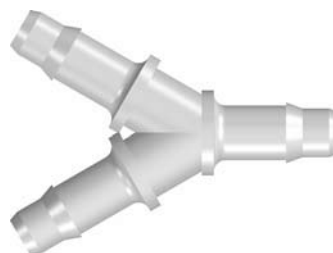
**Y260 (-1 -2 -6 -9 -9002 -J1A)**

Y Connector with 200 Series Barbs, 1/4" (6.4 mm) ID Tubing



**Y460 (-1 -2 -6 -9 -J1A)**

Y Connector with 400 Series Barbs, 1/4" (6.4 mm) ID Tubing



**Y055 (-6005)**

Y Connector with 500 Series Barbs, 1/4" (6.4 mm) ID Tubing

