

## Introducing NEW Q-sep™ 3000 Centrifuge for QuEChERS

See page 2 for details.



## Restek Electronic Leak Detector

Protect your data and  
analytical column!

See page 9  
for details!



Subscribe online!  
[www.restek.com/essentials](http://www.restek.com/essentials)

## What's New!

Q-sep™ 3000 Centrifuge.....	2
Parts for ASE® Systems .....	2
Q-sep™ QuEChERS Standards .....	4
Electronic Flowmeter .....	8
EZ No-Vent™ .....	10
GC/MS Cleaning Kit .....	10

## Great Savings!

PLOT Columns .....	6
FREE Base Plate.....	9
Ultra II LC Columns .....	12

Website : [www.chromtech.net.au](http://www.chromtech.net.au) E-mail [info@chromtech.net.au](mailto:info@chromtech.net.au) Tel No : +61 3 9762 2034 Fax No : +61 3 9761 1169



## Introducing NEW Q-sep™ 3000 Centrifuge for QuEChERS

NEW!

- Meets requirements of AOAC and European QuEChERS methodology.
- Supports 50mL, 15mL, and 2mL centrifuge tubes.
- Small footprint requires less bench space.
- Safe and reliable—UL, CSA, and CE approved, 1-year warranty.

Priced to fit your laboratory's budget, the Q-sep™ 3000 Centrifuge is the first centrifuge specifically designed for QuEChERS methodology. This compact, quiet, yet powerful, unit spins at the 3000g force required by the European method.



Centrifuge includes 50mL tube carriers (6), 50mL conical tube inserts (6), 4-place 15mL tube carriers (6), and 2mL tube adaptors (24).

visit [www.restek.com/quechers](http://www.restek.com/quechers)

Description	qty.	cat.#
Q-sep 3000 Centrifuge, 110V	ea.	26230
Q-sep 3000 Centrifuge, 220V	ea.	26231
<b>Replacement Accessories</b>		
50mL Tube Carrier for Q-sep 3000 Centrifuge	2-pk.	26232
4-Place Tube Carrier for Q-sep 3000 Centrifuge	2-pk.	26233
2mL Tube Adaptors for Q-sep 3000 Centrifuge	4-pk.	26234
50mL Conical Tube Insert for Q-Sep™ 3000 Centrifuge	6-pk.	26235

## Extraction Cells and Replacement Parts for ASE® Systems

### Parts for ASE® Systems available:

**Autoseal Tip Assembly** for ASE® 200 Systems  
**Diatomaceous Earth**  
**Extraction Cell Parts** for ASE® 200 Systems  
**Extraction Cell Parts** for ASE® 300/100 Systems  
**Filters** for ASE® 200 Extraction Cells, 20mm  
**Filters** for ASE® 300/100 Extraction Cells, 30mm  
**PEEK™ Washers** for ASE® 200 Systems  
**PEEK™ Washers** for ASE® 300/100 Systems  
**Resprep™ Tools** for ASE® Systems  
**Retaining Ring Pliers** for ASE® 100/200/300 Systems  
**Sample Collection Bottles** for ASE® 300/100 Systems, 250mL  
**Sample Collection Vials** for ASE® 200 Systems, 60mL  
**NEW! Tubing Assembly** for ASE® 200 Systems  
**Valves** for ASE® 100/200/300 Systems

Great Prices & Quick Delivery!

NEW Extraction cells now serialized!



2 Website : [www.chromtech.net.au](http://www.chromtech.net.au) E-mail [info@chromtech.net.au](mailto:info@chromtech.net.au) Tel No : +61 3 9762 2034 Fax No : +61 3 9761 1169



# Air Monitoring

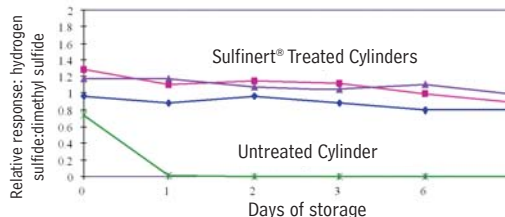
## Sulfinert® Sample Cylinders & Valves

- Stable storage of sulfur and mercury at ppb levels.
- Refinery and natural gas process sampling.
- Inert coating doesn't flake; more durable than Teflon®.
- Cylinders available from 75cc to 2250cc and DOT rated to 1,800 or 5,000psig.
- Valves rated to 3,500 or 6,000psig.



Sulfur compounds are stable in Sulfinert® treated stainless steel systems.

**17ppbv hydrogen sulfide in 500mL cylinders**



### Sulfinert® Treated Alta-Robbins Sample Cylinder Valves

Description	DOT Pressure Rating	qty.	cat.#
1/4" Male NPT Outlet	6,000psig	ea.	22109

### Sulfinert® Treated Ultra-High Pressure Sample Cylinders, 316L Stainless Steel

5,000psig			
Size	qty.	Swagelok part #	cat.#
150cc	ea.	316L-50DF4-150	22111
300cc	ea.	316L-50DF4-300	22112
500cc	ea.	316L-50DF4-500	22113

For additional cylinder sizes, pressure ratings and valve configurations, visit [www.restek.com/air](http://www.restek.com/air)



## Ultra-Clean Resin

Equivalent to XAD-2 Resin;  
**Exclusively from Restek!**

- Eliminates the hassle of cleaning and testing before semi volatile sampling.
- Cleaned, GC tested and certified by TO-13A protocol.
- Quantity discounts available.

### method applications

- Dioxins
- PAHs



Description	cat.#	Price-per-bottle		
		1-4 bottles	5-9 bottles	10+ bottles
Ultra-Clean Resin, 100 grams	24230	/ea.	/ea.	/ea.

### PATENTS & TRADEMARKS

Restek patents and trademarks are the property of Restek Corporation. Other trademarks appearing in Restek literature or on its website are the property of their respective owners.



## 2nd Source TO-14A/TO-15 Gas Calibration Standards

- Standards from TWO manufacturers provides second source standards on one order.
- 12 month stability in transportable cylinders.
- Drop shipped for fast delivery and maximum shelf life.



**A. Spectra 104L Cylinders**

**B. Scotty 110L Cylinders (Pi-marked Cylinders for EU Regulations)**

**NEW!**

Naphthalene now added to Mass APH Mix and TO-15 Mix at no extra cost!

3 Website : [www.chromtech.net.au](http://www.chromtech.net.au) E-mail: [info@chromtech.net.au](mailto:info@chromtech.net.au) Tel No : +61 3 9762 2034 Fax No : +61 3 9761 1169

visit [www.restek.com/air](http://www.restek.com/air) for more information on Restek air products





# QuEChERS

Quick, Easy, Cheap, Effective, Rugged and Safe!

Extraction and dSPE Q-sep™ Tubes for pesticide residue analysis from food products



**Exclusively at Restek:**  
**Internal Standards and**  
**Quality Control Standards**  
to support QuEChERS Methods!

Q-sep™



**Save time and money with Restek's convenient mixes!**

## QuEChERS Internal Standard Mix for GC/ECD Analysis

PCB 18 tris-(1,3-dichloroisopropyl)phosphate  
PCB 28  
PCB 52  
50µg/mL each in acetonitrile, 5mL/ampul  
cat. # 33265 (ea.)

## QuEChERS Internal Standard Mix for GC/MS Analysis

PCB 18 50µg/mL tris-(1,3-dichloroisopropyl)  
PCB 28 50 phosphate 50  
PCB 52 50 triphenylmethane 10  
triphenyl phosphate 20  
In acetonitrile, 5mL/ampul  
cat. # 33267 (ea.)

## QuEChERS Internal Standard Mix for GC/NPD and LC/MS/MS Analysis

triphenyl phosphate 20µg/mL  
tris-(1,3-dichloroisopropyl)phosphate 50µg/mL  
In acetonitrile, 5mL/ampul  
cat. # 33266 (ea.)

## QuEChERS Internal Standard Mix for LC/MS/MS Analysis

nicarbazin  
10µg/mL in acetonitrile, 5mL/ampul  
cat. # 33261 (ea.)

## QuEChERS Quality Control Standards for GC/MS Analysis

Cat.# 33268: PCB 138 & PCB 153  
Cat.# 33264: anthracene  
50µg/mL each in acetonitrile, 5mL/ampul  
cat. # 33268 (ea.)  
100µg/mL in acetonitrile, 5mL/ampul  
cat. # 33264 (ea.)

## QuEChERS Single-Component Reference Standards

Concentration is µg/mL. Solvent: Acetonitrile (ACN)

Compound	Conc.	cat.# (ea.)	price
PCB 18 (5mL)	50	33255	
PCB 28 (5mL)	50	33256	
PCB 52 (5mL)	50	33257	
PCB 138 (5mL)	50	33262	
PCB 153 (5mL)	50	33263	
triphenylmethane (5mL)	10	33260	
triphenylphosphate (5mL)	20	33258	
tris(1,3-dichloroisopropyl)phosphate (5mL)	50	33259	

## Complete Product Offering

**to support**  
**AOAC (2007.01) &**  
**European (EN15662)**  
**QuEChERS Methods**

- Comprehensive portfolio of QuEChERS tubes.
- Method-specific internal and QC standards.
- Rxi®-5Sil MS Capillary column
- Ultra Aqueous C18 LC Column.



## At Risk for Melamine

Meet new FDA guidance for melamine contamination in at-risk pharmaceutical components.

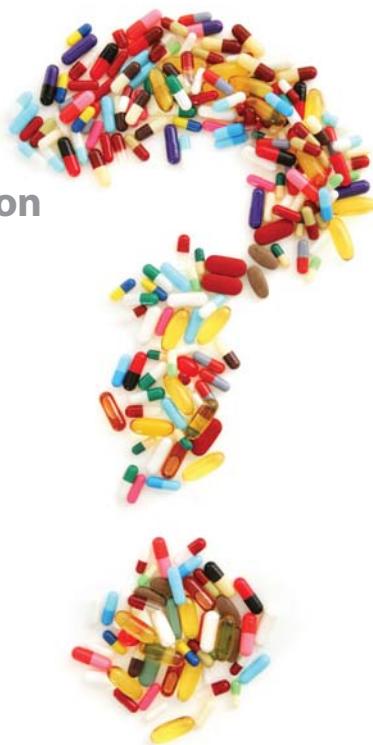
### Melamine Analysis Kit.....cat. # 33254 (kit)

Detect melamine and related compounds by GC/MS with a complete analysis kit. Consistent with FDA procedure and new guidance for at-risk pharmaceutical components.

Kit includes (also sold individually):

- **Rxi®-5Sil MS with 5 meter Integra Guard™ Column**
- **Standards**
- **Derivatization Reagent**
- **Accessory Tubes and Syringe Filters**
- **Easy-to-Follow Instructions** with procedural check list to simplify laboratory documentation!

**SAVE**  
when you  
buy as a kit



Keep up with advances in melamine analysis at [www.restek.com/melamine](http://www.restek.com/melamine)

## USP Residual Solvents Standards

### USP-Equivalent Standards

to Achieve USP <467> Compliance

#### Residual Solvents - Class 1

(5 components)

In dimethyl sulfoxide, 1mL/ampul

cat. # 36279 (equivalent to USP#1601102) (ea.)

#### Residual Solvents Class 2 - Mix B

(8 components)

In dimethyl sulfoxide, 1mL/ampul

cat. # 36280 (equivalent to USP#1601292) (ea.)

#### Residual Solvents Class 2 - Mix A

(15 components)

In dimethyl sulfoxide, 1mL/ampul

cat. # 36271 (equivalent to USP#1601281) (ea.)

#### Residual Solvents Class 2 - Mix C

(8 components)

In dimethyl sulfoxide, 1mL/ampul

cat. # 36273 (equivalent to USP#1601306) (ea.)

**In  
Stock  
Now!**



Get more on **RESIDUAL SOLVENTS** at [www.restek.com/ovi](http://www.restek.com/ovi)

5 Website : [www.chromtech.net.au](http://www.chromtech.net.au) E-mail [info@chromtech.net.au](mailto:info@chromtech.net.au) Tel No : +61 3 9762 2034 Fax No : +61 3 9761 1169

contact your Restek representative today!

## Rxi®-5Sil MS Columns

### Exceptionally Inert Columns for GC/MS and Trace Level Analyses

- Low bleed at high temperatures, for higher sensitivity and lower detection limits.
- Excellent inertness for highest signal of acidic, basic and high polar compounds.
- Superior reproducibility: each column has the same Rxi®-quality.

(Crossbond®, selectivity close to 5% diphenyl/95% dimethyl polysiloxane)

ID	df (μm)	temp. limits	length	cat. #
0.18mm	0.18	-60 to 330/350°C	20-Meter	43602
0.18mm	0.36	-60 to 330/350°C	20-Meter	43604
0.25mm	0.25	-60 to 330/350°C	30-Meter	13623
0.25mm	0.25	-60 to 330/350°C	60-Meter	13626
0.25mm	0.50	-60 to 330/350°C	30-Meter	13638
0.32mm	0.50	-60 to 330/350°C	30-Meter	13639

**Do you want to extend column lifetime and prevent column coupling?**

Try Rxi®-5Sil MS with Integra Guard!  
Get the protection without the connection!

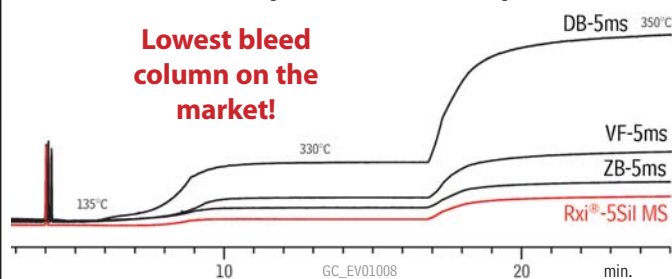


### Make the Switch to Rxi® columns!

Experience what Rxi® did for many others

- Lower detection limits
- Better peak shape
- Accurate results

### Rxi®-5Sil MS Competitor Bleed Comparison





Increase reliability of your data  
by upgrading to Rxi® quality.

## Rxi®-5HT Columns

### Lowest Bleed, Most Inert High Temperature Column!

Replace DB-5HT, Inferno, and VF5HT  
and benefit from better data!

nonpolar phase; 5% diphenyl/95% dimethylpolysiloxane

ID	df (μm)	temp. limits	length	cat. #
0.25mm	0.10	-60 to 400°C	15-Meter	13905
0.25mm	0.10	-60 to 400°C	30-Meter	13908
0.25mm	0.25	-60 to 400°C	30-Meter	13923
0.32mm	0.10	-60 to 400°C	15-Meter	13906
0.32mm	0.10	-60 to 400°C	30-Meter	13909
0.32mm	0.25	-60 to 400°C	30-Meter	13924
0.53mm	0.15	-60 to 400°C	30-Meter	13910

## Rxi®-35Sil MS Columns

### Selective, inert column for ongoing trace analysis of semivolatiles!

midpolarity phase; equivalent to 35% phenyl methylpolysiloxane

ID	df (μm)	temp. limits	length	cat. #
0.25mm	0.25	50 to 340/360°C	30-Meter	13823
0.32mm	0.25	50 to 340/360°C	30-Meter	13824
0.53mm	0.50	50 to 320/340°C	30-Meter	13840

## Rxi®-XLB Columns

### Get longer life time while enjoying better peak shape!

low polarity proprietary phase

ID	df (μm)	temp. limits	length	cat. #
0.18mm	0.18	30 to 340/360°C	20-Meter	43702
0.25mm	0.25	30 to 340/360°C	15-Meter	13720
0.25mm	0.25	30 to 340/360°C	30-Meter	13723
0.25mm	0.25	30 to 340/360°C	60-Meter	13726
0.25mm	0.50	30 to 340/360°C	30-Meter	13738
0.25mm	1.00	30 to 340/360°C	30-Meter	13753
0.32mm	0.25	30 to 340/360°C	30-Meter	13724
0.32mm	0.50	30 to 340/360°C	30-Meter	13739
0.53mm	0.50	30 to 340/360°C	30-Meter	13740

\*Maximum temperatures listed are for 15- and 30-meter lengths. Longer lengths may have a slightly reduced maximum temperature.



### phases available

- Rxi®-1ms
- Rxi®-5ms
- Rxi®-5Sil MS
- Rxi® guard/retention gap columns
- Rxi®-35Sil MS
- Rxi®-17
- Rxi®-XLB



RESTEK  REFINED

# Next Generation PLOT Columns

Keep retention times stable and minimize GC down time using improved PLOT columns

Restek has developed new procedures to manufacture PLOT columns with concentric stabilized adsorption layers. The new generation PLOT columns show a constant flow behavior and have significantly improved mechanical stability, resulting in easier operation, more reproducible retention times, and reduced particle release.

**NEW!**

**advanced technology**

## **PLOT Columns** (fused silica)

- Rt<sup>®</sup>-Q-BOND
- Rt<sup>®</sup>-QS-BOND
- Rt<sup>®</sup>-S-BOND
- Rt<sup>®</sup>-U-BOND
- Rt<sup>®</sup>-Alumina BOND/Na<sub>2</sub>SO<sub>4</sub>
- Rt<sup>®</sup>-Alumina BOND/KCl
- Rt<sup>®</sup>-Msieve 5A
- MXT<sup>®</sup>-Msieve 5A

(Siltek<sup>®</sup>-treated stainless steel PLOT)



**Get Standards to support ASTM methods!**

D3606 • Oxygenates Setup • PIANO • SimDist • PONA VI

**NOW  
ON SALE**  
Restek PLOT  
Columns  
through the end  
of 2009!



## **tech tip**

**Do you want to use valve injection or switching?**

For this application, Restek bonded PLOT columns outperform any other PLOT column.

- **Best performance**
- **Best reproducibility**
- **Best price**



DHA analysis: Trouble with tailing alcohol peaks is over...

## Rtx<sup>®</sup>-1-PONA

- **Sharp alcohol peaks: correct and accurate data**
- **Each column tested to ASTM 6730 specifications**
- **Guaranteed Performance: Temperature ranges up to 300°C for elution of higher hydrocarbons.**

Restek developed a unique deactivation technology, that makes alcohols elute as sharp peaks in detailed hydrocarbon analysis, as published by ASTM D6730. Columns are stable up to 300°C and are extremely reproducible. Restek is the **ONLY** company that individually tests for ASTM specifications.

### Rtx<sup>®</sup>-1PONA Column (fused silica)

(Crossbond<sup>®</sup> 100% dimethyl polysiloxane—optimized for hydrocarbon analysis)

ID	df (μm)	temp. limits	length	cat. #
0.20mm	0.50	-60 to 300/340°C	50-Meter	10146
0.25mm	0.50	-60 to 300/340°C	100-Meter	10195
0.25mm	0.50	-60 to 300/340°C	150-Meter	10197

### Rtx<sup>®</sup>-5PONA Tuning Column (fused silica)

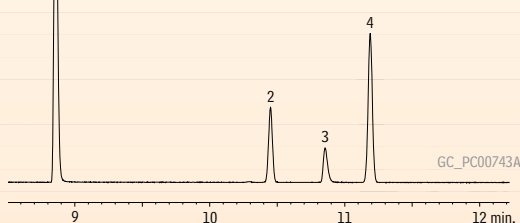
(Crossbond<sup>®</sup> 5% diphenyl/95% dimethyl polysiloxane)

ID	df (μm)	temp. limits	length	cat. #
0.25mm	1.0	-60 to 325°C	5-Meter	10196

### Rtx<sup>®</sup>-1PONA column produces sharp symmetrical alcohol peaks!

1. ethanol
2. C5
3. *tert*-butanol
4. 2-methylbutene-2

C5 efficiency: 613,596 total theoretical plates  
k' (C5): 0.489  
*tert*-butanol skewness: 1.25  
Resolution (*tert*-butanol/2-methylbutene-2): 5.60



**Column:** Rtx<sup>®</sup>-1PONA, 100m, 0.25mm ID, 0.5μm (cat.# 10195) plus Rtx<sup>®</sup>-5PONA tuning column, 2.62m, 0.25mm ID, 1.0μm, connected via Press-Tight<sup>®</sup> connector (cat.# 20446) **Sample:** custom detailed hydrocarbons analysis (DHA) mix, neat  
For full analytical conditions visit [restek.com](http://restek.com) and search for GC\_PC00743A

Meet & exceed ASTM D6730, including alcohols!



### tech tip

**Don't forget: The ASTM D6730 method also requires a tuning column.**

Restek offers this also as the 5m Rtx<sup>®</sup>-5PONA tuning column.



### Got Sulfur?

Get Sulfinert<sup>®</sup> Treated Sample Cylinders!  
see page 3 for details



# Lab Gas Issues?

## RESTEK HAS THE SOLUTION!

### MEASUREMENT



## Introducing the **NEW** Restek **ProFLOW 6000** Electronic Flowmeter

The ProFLOW 6000 is an electronic device capable of measuring bidirectional volumetric flow for most gases. Real-time measurements can be made for various types of flow paths, including continually changing gas types.

**Additional state-of-the-art features include:**

- Measures volumetric flow for all gases across a range of 0.5-500 mL/min.
- NIST traceable calibration
- Explosion-proof rating for flammable and explosive gases
- Accuracy of  $\pm 2\%$  of flow or  $\pm 0.05$  mL/min., whichever is greater
- Over range warning indicator
- Auto shut-off feature
- Use as a bench-top or hand-held unit
- Ergonomic design and side grips for comfort
- Measures most gas types
- Convenient carrying/storage case included
- CE certified
- Uses 2-AA batteries
- Data output via USB port
- Re-calibration service available
- 1-year warranty

**Coming  
Soon!**

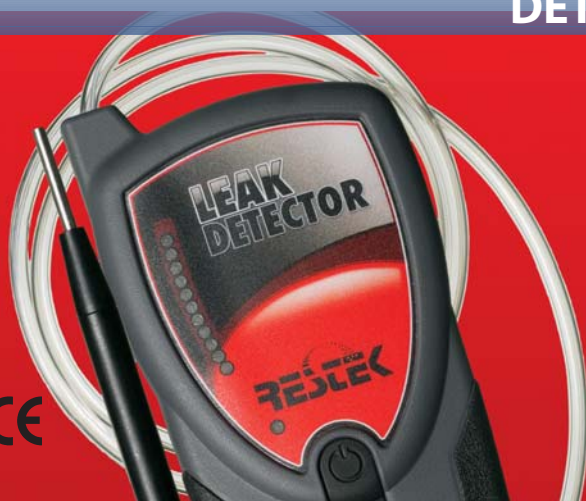
**Description**

Restek ProFLOW 6000 Electronic Flowmeter  
Soft-Side Storage Case

qty.	cat.#
ea.	22656
ea.	22657

Go to [www.restek.com/flowmeter](http://www.restek.com/flowmeter) for details.

## DETECTION



## Restek Electronic Leak Detector

**Protect your data and analytical column!**

High temperature methods are extremely sensitive to carrier gas impurities, such as water and oxygen. Make sure you have clean carrier gas and frequently check connections and injection system fittings for leaks using a Restek electronic leak detector.

Leak Detector with Universal Charger Set  
(US, UK, European, Australian)

Cat.# 22839

[www.restek.com/leakdetector](http://www.restek.com/leakdetector)

## REGULATION

## Ultra-High Purity (UHP) Gas Regulators

Most stable outlet pressure control with no secondary pressure regulation needed.

### Dual-Stage, Chrome-Plated

Fitting	qty.	cat.#
CGA 580 (N <sub>2</sub> , He, Ar)	ea.	21667
CGA 350 (H <sub>2</sub> , P <sub>2</sub> )	ea.	21668
CGA 590 (Air)	ea.	21669

### Dual-Stage, Stainless Steel

Fitting	qty.	cat.#
CGA 580 (N <sub>2</sub> , He, Ar)	ea.	20662
CGA 350 (H <sub>2</sub> , P <sub>2</sub> )	ea.	20663
CGA 590 (Air)	ea.	20664

### Single-Stage, Chrome-Plated Brass

Fitting	qty.	cat.#
CGA 580 (N <sub>2</sub> , He, Ar)	ea.	20646
CGA 350 (H <sub>2</sub> , P <sub>2</sub> )	ea.	20647
CGA 590 (Air)	ea.	20648

### Single-Stage, Stainless Steel

Fitting	qty.	cat.#
CGA 580 (N <sub>2</sub> , He, Ar)	ea.	20665
CGA 350 (H <sub>2</sub> , P <sub>2</sub> )	ea.	20666
CGA 590 (Air)	ea.	20667



Inlet gauge: 0 to 4,000psig (0-27,579kPa)  
 Outlet assembly: diaphragm valve, 1/8" tube fitting  
 Outlet pressure: 0 to 100psig (0-689kPa)  
 Outlet gauge: 30" — 0 to 200psig (0-1379kPa)

**Compare  
and SAVE!**

Visit [www.restek.com](http://www.restek.com) for more information on Gas Regulators.

## PURIFICATION

## Super-Clean Gas Filter and Base Plate Kit

**FREE Base Plate**  
 with purchase of 2 triple or 2-fuel filters

Description	qty.	cat.#
Restek Exclusive Triple Filter Kit: includes 2 triple filters & free base plate	kit	22859-409
Restek Exclusive Fuel Gas Filter Kit: includes 2 fuel gas filters & free base plate	kit	20529-409

Offer valid through Dec. 31, 2009. Cannot be combined with other offers or discounts.



11Website : [www.chromtech.net.au](http://www.chromtech.net.au) E-mail [info@chromtech.net.au](mailto:info@chromtech.net.au) Tel No : +61 3 9762 2034 Fax No : +61 3 9761 1169





# GC/MS Essentials

## EZ No-Vent™ GC Column-Mass Spectrometer Connector for Shimadzu GCs

- Change GC/MS columns in minutes without venting—100µm transfer line throttles vacuum and eliminates the need to vent.
- Easy to install and maintain—no special tools or plumbing required.
- Gold-plated body for inertness.
- Deactivated transfer line keeps analytes focused.
- High-temperature aluminum ferrules eliminate leaks at the transfer line fitting.
- Lower cost than other “no-vent” fittings.
- Can be used on Shimadzu QP 2010 and QP 2010 Plus mass spectrometers.



Description	qty.	cat.#
EZ No-Vent Connector Kit for Shimadzu QP 2010 & QP 2010 Plus (Kit includes: EZ No-Vent Connector, two 0.4mm ID polyimide ferrules for capillary column, two 0.4mm ID aluminum ferrules for transfer line, 100µm deactivated transfer line (3 ft.), column plug, capillary nut. Replacement ferrules for connecting capillary column to EZ No-Vent Connector:	kit	22431
0.4mm ID (Polyimide)	2-pk.	21015
0.5mm ID (Polyimide)	2-pk.	21016
Replacement ferrules for connecting transfer line to EZ No-Vent Connector: 0.4mm ID (Aluminum)	2-pk.	22432
Replacement 100µm deactivated transfer line	3 ft.	21018
Replacement EZ No-Vent Capillary Nut	5-pk.	21900
Replacement EZ No-Vent Plug	2-pk.	21915
Open-End Wrenches (1/4" x 5/16")	2-pk.	20110

For other instrument specific EZ No-Vent™ connectors, visit [www.restek.com](http://www.restek.com)

## Inland 45 Pump Oil

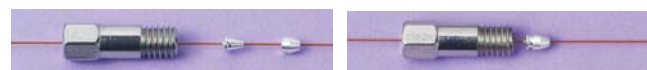
- Recommended for optimum mass spec performance.



Description	Similar to Agilent part #	qty.	cat.#
Inland 45 Pump Oil	6040-0834	1 liter	24819

## Alumaseal® Ferrules\*

- Aluminum construction.
- Unique two-piece design permanently locks on fused silica tubing without causing breakage.
- Stable to 550°C.
- Use with any 1/16" compression-type fitting.
- Will not crack or fragment.
- Excellent for GC/MS.



Ferrule ID	Fits Column ID	qty.	cat.#
0.4mm	0.25mm	10-pk.	21472
0.5mm	0.32mm	10-pk.	21473
0.8mm	0.53mm	10-pk.	21474

\*Patent pending.

## Restek MSD Source Nut

- 1.2mm nut bore permits easy removal of ferrules with a standard tapered-needle file.
- Design enhances ease of threading onto the transfer line and improves overall lifetime.



Improved design!

Description	Similar to Agilent part #	qty.	cat.#
(Detector) MSD Source Nut	05988-20066	2-pk.	20643

## GC/MS Cleaning Kit

Poor sensitivity, loss of sensitivity at high masses, or high multiplier gain during an auto tune are all indicators that your mass spectrometer source may need to be cleaned. Restek has assembled all of the necessary components for cleaning and polishing your ion source.



Description	qty.	cat.#
Mass Spec Cleaning Kit with Dremel Tool	kit	27194
Mass Spec Cleaning Kit without Dremel Tool	kit	27195
Mass Spec Cleaning Kit Replacement Parts Kit (includes cloths, micro mesh sheets, small and large gloves)	kit	27196

# Measure Your Savings!

Great  
Prices,  
Great  
Products!

Stock up and save today!  
Visit [www.restek.com/syringe](http://www.restek.com/syringe)



## Custom Coatings for Ultimate Inertness!

### Siltek® Deactivation for Liners

Patented Siltek® deactivation process for liners produces a highly inert glass surface that features high temperature stability, extreme durability, and low bleed.

- Maximizes the inertness of the sample pathway with proprietary deactivation.
- Minimizes breakdown.
- Low bleed.
- Thermally stable.
- "Clean and green"—manufactured without the use of harmful organic solvents.
- Ideal for chlorinated pesticides.

For Siltek® deactivated inlet liners, add the corresponding suffix number to the liner catalog number.

qty.	Siltek Liner		Siltek Liner w/Wool		Siltek Liner w/CarboFrit	
each	-214.1	addl. cost	-213.1	addl. cost	-216.1	addl. cost
5-pk.	-214.5	addl. cost	-213.5	addl. cost	-216.5	addl. cost
25-pk.	-214.25	addl. cost	-213.25	addl. cost	-216.25	addl. cost

Restek can coat most any  
chromatography parts including:

- liners
- instrument parts
- sample loops
- fittings
- vials
- tubing





## Ultra II<sup>TM</sup> LC Columns

Universal application for **Any LC System**, providing scalability and unsurpassed selectivity on a wide range of particle sizes.



Add -712 to end of part number to receive this discount.  
**Offer ends 3/31/2010**



### Available Phases:

- C18
- Biphenyl
- Aromax
- Silica
- Carbamate
- C8
- PFP Propyl
- Aqueous C18
- IBD

### Available Particle Sizes:

- 1.9µm for UHPLC
- 2.2µm for UFLC and RRLC
- 3µm and 5µm for HPLC

[www.restek.com/ultra2](http://www.restek.com/ultra2)

**More phases coming soon!**

## Save on Preventive Maintenance Kits & Parts for Agilent & Waters Systems

Description for Agilent LCs	Model #	Similar to Agilent part #	qty.	cat.#
Preventive Maintenance Kit	1050	01078-68721	kit	25259
Autosampler Preventive Maintenance Kit	1100	G1313-68709	kit	25271
Pump Maintenance Kit for Agilent	1050, 1100	G1311-68710	kit	25270
Description for Waters LCs	Model #	Similar to Waters part #	qty.	cat.#
Preventive Maintenance Kit	Alliance 2690, 2695	WAT270944	kit	25143
Pump Preventive Maintenance Kit	600 Pump	WAT052675	kit	25144
Autosampler Preventive Maintenance Kit	717 Autosampler	WAT052669	kit	25145
Pump Preventive Maintenance Kit	616 Pump	WAT052672	kit	25146
Preventive Maintenance Kit	515 Pump	WAT052587	kit	26519
PerformancePLUS Check Valve Cartridge	M6KA, 501, 510, 515, 590, 600E	700000254	2-pk.	25370



Replacement parts are also available for PerkinElmer, Shimadzu, Thermo Scientific, Beckman & Hitachi HPLC Systems at very affordable prices.

14/Website : [www.chromtech.net.au](http://www.chromtech.net.au) E-mail [info@chromtech.net.au](mailto:info@chromtech.net.au) Tel No : +61 3 9762 2034 Fax No : +61 3 9761 1169





## Mobile Phase Management

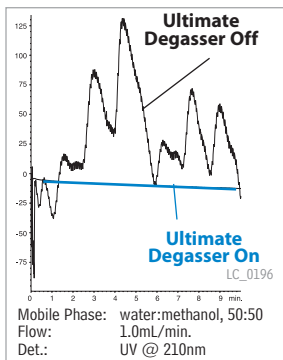
### Mobile Phase Degasser

In-line vacuum degassing

- Prevents oxygen from causing flow rate instability and baseline noise.
- Prevents bubbles from forming in check valves, at connections, or in detector flow cells.
- More effective than sonication or helium sparging.



**Degasys Ultimate Degasser provides highly stable baselines**



#### Specifications:

Residual Oxygen <sup>1</sup>	0.9ppm
Pressure Loss <sup>1</sup>	0.24psi (1.65kPa)
Internal Volume	500μL

<sup>1</sup>At a flow rate of 1mL/min.

Wetted Parts	Teflon AF, PTFE, ETFE, PPS
Max Flow Rate	7mL/min./channel

Description	qty.	cat.#
110V Mobile Phase Degasser (4 Channel, 7mL/min./channel)	ea.	25189
220V Mobile Phase Degasser (4 Channel, 7mL/min./channel)	ea.	25194

To prevent system damage, do not use the Degasys system with solutions containing TFA at concentrations greater than 5%.

### Waste Overflow Indicator for HPLC Systems

- Audible alarm instantly alerts user, preventing overflow.
- Compact, battery-operated unit.

**The new Restek Waste Overflow Indicator will help to keep your mobile phase waste where it belongs—in the waste container!**



Description	qty.	cat.#
Waste Overflow Indicator	kit	26543
Replacement AA Battery	ea.	26544
Replacement AA Batteries	3-pk.	26545

### Hub-Cap 4 Liter Bottle Tops, Adapters, & Filter Kit

Hub-Cap bottle tops are great at keeping your mobile phase lines where they belong and seal your bottles more effectively than parafilm, aluminum foil, or tape. Adapters are designed to use with the Opti-Cap™ on 4L solvent bottles.



Description	qty.	cat.#
Hub-Cap (includes bottle cap and plug)	ea.	26541
Hub-Cap Multi-pack	3-pk.	26542
Hub-Cap 4L Bottle Adapter	ea.	26538
Hub-Cap 4L Bottle Adapter Multi-pack	3-pk.	26539
Hub-Cap 4L Bottle Adapter and Opti-Cap	ea.	26540
Hub-Cap Filter Kit for 4L or Wheaton bottles	kit	26395
Replacement Membrane Filters	qty.	cat.#
Polypropylene Membrane Filters, 47mm, 0.45μm	100-pk.	26396
Polypropylene Membrane Filters, 47mm, 0.22μm	100-pk.	26397
Nylon Membrane Filters, 47mm, 0.45μm	100-pk.	26398
Nylon Membrane Filters, 47mm, 0.22μm	100-pk.	26399

### Opti-Cap™ Bottle Top

The most economical way to helium-sparge and deliver HPLC mobile phases. The Opti-Cap™ top fits all standard GL-45 bottles and has two 1/8-inch holes and one 1/16-inch hole for tubing. All 3 openings are designed for threaded PEEK™ plug.

*Bottle not included.*



Description	qty.	cat.#
Opti-Cap (Cap and PEEK Plug)	ea.	25300



# Super Septa!

- Precision molded.
- Preconditioned and ready to use.
- Packaged in precleaned jars.

## Restek Thermolite® Septa

Usable to 340°C inlet temperature.

## Restek IceBlue® Septa

Usable to 250°C inlet temperature.

## BTO® Septa

Usable to 400°C inlet temperature.



Visit [www.restek.com/septa](http://www.restek.com/septa) for a complete listing of septa available.



Lit. Cat.# GNES1150-INT

2009 v.7

© 2009 Restek Corporation.

